

PARTICIPANTS

Coordination



Local coordination



Partners

Deir el Ahmar Municipality (Lebanon)

Ainata Municipality (Lebanon)

Barqa Municipality (Lebanon)



CONTACTS

Coordinator

David SOLANO
Tel. +34 973 481 752 - Ext. 202
david.solano@ctfc.es

Manager

Dr. Fabrice GOURIVEAU
Tel. +34 973 481 752 - Ext. 217
fabrice.gouriveau@ctfc.es



Ctra. St. Llorenç de Morunys km 2,
25280 Solsona, Spain
Tel. +34 973 481 752

Action co-funded by the European Union

Agriculture and Rural Development
Programme from the Ministry of
Agriculture of Lebanon



The contents of this leaflet are the sole responsibility of the Forest Sciences Centre of Catalonia and can in no way be taken to reflect the views of the European Union.



**Building-up a participatory
governance framework for the
sustainable development of forests
and rural territories in Lebanon**

<http://reforleb.ctfc.cat>

**Action co-funded by the
European Union**



**Forestry Actions in Lebanon
Budget line ENPI/2010/021-837
Contract Reference ENPI/2014/344-773**



ACTION OVERVIEW

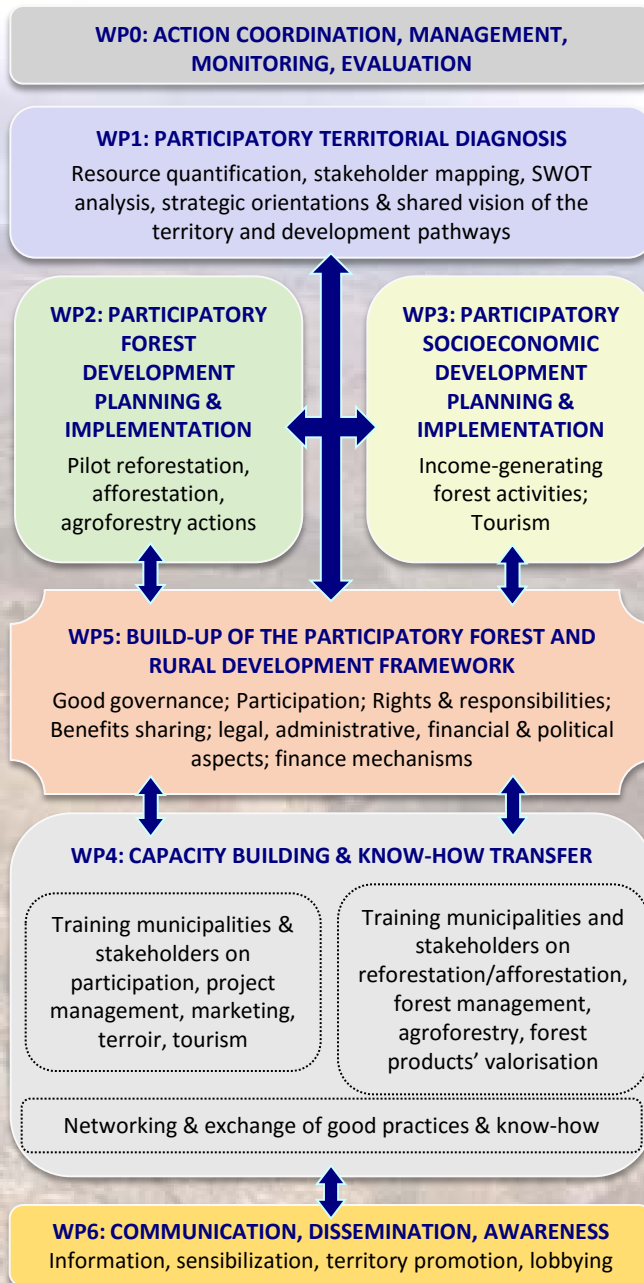
REFORLEB is a reforestation project aiming at increasing forest cover and restoring forest socioeconomic functions, in the framework of the 40 Million Trees Programme led by the Lebanese Government.

It thrives to design, implement and monitor sustainable reforestation and afforestation activities in the municipalities of Barqa, Deir el Ahmar and Ainata (North Lebanon), with and for local communities.

It is funded by the EU-ENPI programme with a budget of 399,168.11 € (80% EU co-financing) for the period 2014-2018.



ACTIVITIES



ACHIEVEMENTS

REFORLEB contributes to:

R1. Increase the forest cover in each partner municipality.

R2. Initiate income-generating initiatives linked to sustainable forestry.

R3. Build-up a participatory territorial framework for forest and rural development, engaging local stakeholders and adaptable to other regions of Lebanon.

R4. Train municipalities and local stakeholders, including vulnerable groups, to increase their skills, knowledge and capacity to participate actively in forest management and rural development activities.

R5. Make citizens, policy makers and foresters more aware of the environmental and socioeconomic benefits of forests, and of the importance to protect them.

