

PARTICIPANTS

Coordination



Local coordination



Partners

Deir el Ahmar Municipality (Lebanon)

Ainata Municipality (Lebanon)

Barka Municipality (Lebanon)



CONTACTS

Coordinator

David SOLANO
Tel. +34 973 481 752 - Ext. 202
david.solano@ctfc.es

Manager

Dr. Fabrice GOURIVEAU
Tel. +34 973 481 752 - Ext. 217
fabrice.gouriveau@ctfc.es



Ctra. St. Llorenç de Morunys km 2,
25280 Solsona, Spain
Tel. +34 973 481 752

Project co-funded by:



European Union

The contents of this leaflet are the sole responsibility of the Forest Sciences Centre of Catalonia and can in no way be taken to reflect the views of the European Union.



**Building-up a participatory
governance framework for the
sustainable development of forests
and rural territories in Lebanon**

<http://reforleb.ctfc.cat>

Forestry Actions in Lebanon

Budget line ENPI/2010/021-837
*Agriculture and Rural Development
Programme*

Call Ref. EuropeAid/135-358/M/ACT/LB
Contract Ref. ENPI/2014/344-773



PROJECT OVERVIEW

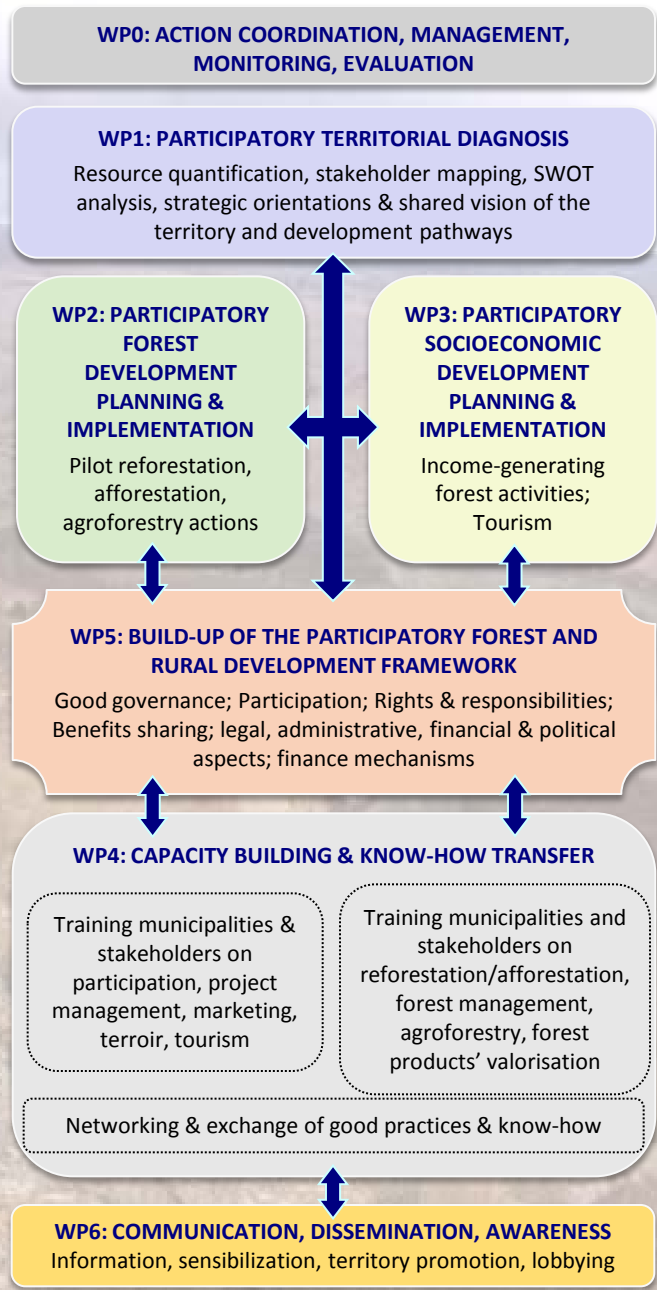
REFORLEB is a reforestation project aiming at increasing forest cover and restoring forest socioeconomic functions, in the framework of the 40 Million Forest Trees Programme led by the Lebanese Government.

It thrives to design, implement and monitor sustainable reforestation and afforestation activities in the municipalities of Barka, Deir el Ahmar and Ainata (North Lebanon), with and for local communities.

It is funded by the EU-ENPI programme with a budget of 399,168.11 € (80% EU co-financing) for the period 2014-2018.



ACTIVITIES



ACHIEVEMENTS

REFORLEB contributes to:

- R1.** Increase the forest cover in each partner municipality.
- R2.** Initiate income-generating initiatives linked to sustainable forestry.
- R3.** Build-up a participatory territorial framework for forest and rural development, engaging local stakeholders and adaptable to other regions of Lebanon.
- R4.** Train municipalities and local stakeholders, including vulnerable groups, to increase their skills, knowledge and capacity to participate actively in forest management and rural development activities.
- R5.** Make citizens, policy makers and foresters more aware of the environmental and socioeconomic benefits of forests, and of the importance to protect them.

